



Press release RaidSonic 01.10/2011

ICY BOX®
www.icybox.de

Admin's Little Helpers.

(1) Where HDDs Like to Dock.

This is to everybody who stores HDDs in the cabinet and sometimes employs one without an enclosure.

What if you have to employ such a „naked" hard drive? The easiest way is to use a simple SATA-to USB adaptor. It is called ICY BOX IB-AC-603. It is for 2.5" HDDs and leads to a USB 3.0 plug. IB-AC603 comes with a plastic enclosure to protect the HDD when employed. For similarly practical storage containers – without SATA interface, see (3).

If the adaptor is too inconvenient for you or you also want to employ 3.5" HDDs there are docking stations for you and your HDDs. ICY BOX has single and double docking stations, with USB 2.0, USB 3.0, with eSATA. A double cloning station will come at the end of this month, a quad docking station as well as single station with Firewire are on the drawing board. They are for 2.5" HDDs as well as 3.5" HDDs.



IB-110StU3-B
with USB 3.0
RRP Euro 33.90

IB-110StUS2-B
with USB 2.0 and eSATA
RRP Euro 23.90

IB-111StU3-Wh
with USB 3.0 and
aluminium body
RRP Euro 29.90



IB-120StU3-Wh
with USB 3.0, JBOD,
and aluminium body
RRP Euro 39.90



ICY BOX®

www.icybox.de

IB-120CL-U3

Clone station with USB 3.0 and aluminium body, available from end of October. Cloning, that is making a complete copy of one HDD's content to another one, is even possible without connection to a PC. The system thus can make clones in the night while the PC is switched off to save power. Connected to a PC, the IB-120CL-U3 also works like a normal JBOD system.

RRP Euro 46,90

IB-140StU3-Wh

Quadruple docking station. Specs, price and launch date are not yet fixed. Probably at the beginning of 2012.



(2) Multi-Port Cardreaders with USB 3.0 Interfaces: IB-865 and IB-866.



IB-865

This one fits a 3.5" standard drive bay. It is appropriate for more than 60 cards. Moreover, it offers a USB 3.0 interface, which has to be connected directly with the mainboard using a 20 pin plug. Available end of November;

RRP Euro 22,90

IB-866

Adaptor with four USB 3.0 ports for the frontside. Two of the have to be connected with the mainboard using a 20 pin plug. The other ones go to external USB 3.0 A-type -ports. Available end of November;

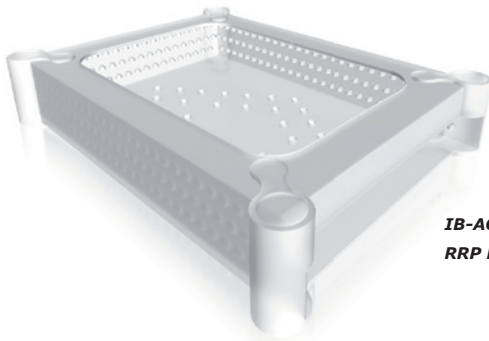
RRP Euro 15,60





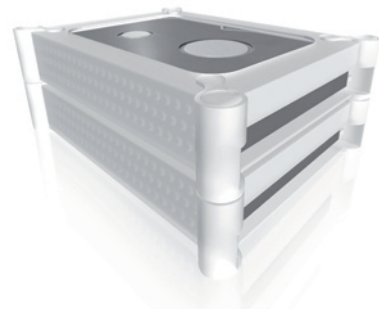
(3) Storage, a Bit Different.

How do HDDs lie in the cabinet if they lie in the cabinet? The 2.5" HDDs prefer an ICY BOX **IB-AC606**, the bigger ones like the **IB-AC607**. These are stack-able silicone boxes which protect against knocks. They have an opening where the HDD interface is. Thus you can employ the HDD while in the box. This is supported by other holes for the heat dissipation. OK, the prime purpose of the boxes is storage.

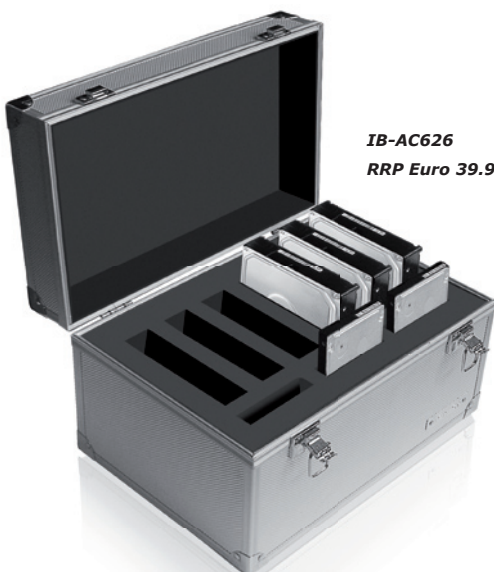


IB-AC607
RRP Euro 5.50

IB-AC606
RRP Euro 4.90



There is an alternative for 2.5" HDDs. The ICY BOX **IB-AC622**. It is for two 2.5" HDDs and great to move them around. Cushions inside protect the HDD against knocks, the lid protects against dust and splashes. Protection against waste of space is by the fact that these boxes are stack-able, too.



IB-AC626
RRP Euro 39.90



IB-AC622
RRP Euro 9.90

And what if someone wants to carry around more than one or two HDDs? ICY BOX **IB-AC626** is a lockable aluminium case (300 x 190 x 170 mm). The inner Styrofoam element holds at HDDs of both formats 3.5" and 2.5" (2 x 9.5 mm, 1 x 12.5 mm). Antistatic bags are included.