

Press release RaidSonic 10.1/2009



New HDD Enclosures with Fast eSATA Ports and more Useful Features

Something very interesting is happening in the center of the ICY BOX brand. That's where you find our external HDD enclosures. Today we like to present some novelties from that area to you. Two external enclosures for a single 3.5" SATA HDD, a RAID system for two 3.5" HDDs, and for 2.5" HDDs there is a new single and a new double enclosure as well as a trayless backplane for two HDDs.

One by one:

NEW: ICY BOX IB-366 Fast Connection to a Fast Processor

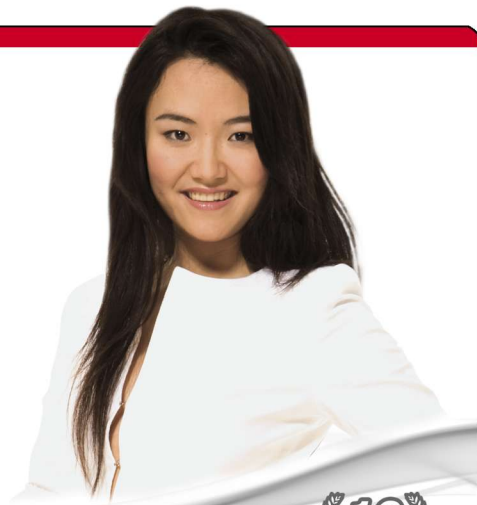
This enclosure for an external 3.5" HDD provides a particularly fast data connection with the computer due to its eSATA interface. Especially if you work with today's multi-core processors you are not willing to lose processing speed at the interface to the external drive. Beside the eSATA there is also a USB port.

Also the changing of the HDD happens as fast and easy as you like it. That's because of the patented Easy Swap® technology. Open the hatch and the HDD is moved out of the enclosure a bit, just good to grasp it and pull it out. When you mount the HDD the hatch pushes it for the last one or two centimeters and presses it on the SATA connector.



Main Features

- Case made of aluminium alloy
- USB 2.0 + eSATA
- Easy Swap® - HDD mount without screws
- works vertically and horizontally
- Hot Plug & Play and Hot Swap
- For SATA (I & II) HDDs
- silent, fanless design
- USB 2.0 up to 480 Mbit/s, eSATA up to 3 Gbit/s
- Power supply: 100 -240 V, 12 V/2 A, 24 W



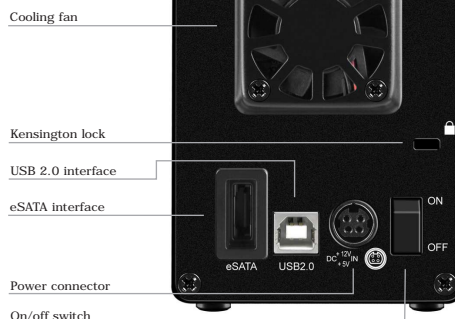
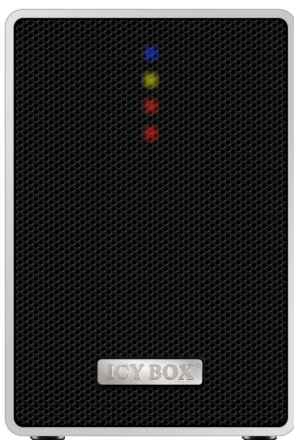
Press release RaidSonic 1.10/2009

ICY BOX®
www.icybox.de

NEW: ICY BOX IB-RD4320 Reliable and Safe. Reliably Safe.

Particularly if you use external HDDs to work with them, use the write mode and not only to store data, RAID is a fine solution. For with RAID 1 (mirroring) the data written are copied simultaneously to the second HDD. That's safe.

The new ICY BOX IB-RD4320 is a reliable RAID system for two 3.5" SATA HDDs. RAID 1, JBOD, RAID 0 und NRAID are possible. The system is prepared for HDDs with more than 2 TB capacity. eSATA as well as a USB port enable fast data transfer. The reliable performance of the ICY BOX IB-RD4320 is independent from the type of computer or OS it is working with.

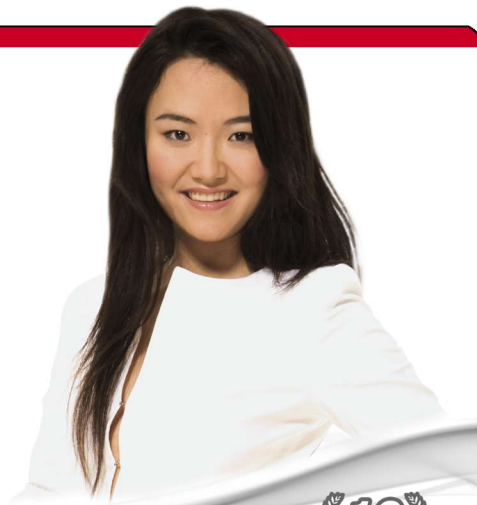


Main Features

- aluminum case
- JBOD, RAID 0, RAID 1, NRAID
- no HDD capacity limit
- supports PC und MAC (Windows 2000/XP/Vista/7, >OS10.4)
- eSATA up to 3,0 Gbit/s
- USB 2.0 up to 480 Mbit/s
- AC: 100~240 V
- external data cable included
- cooling fan

RaidSonic®

...StorageSolutions without limits!



Press release RaidSonic 1.10/2009

ICY BOX®
www.icybox.de

NEW: IB-351StUES2-B, IB-262StUS2-B, IB-2223StS Externally: eSATA; Internally: SATA.

That's something: also the new enclosure for an external 2.5" SATA HDD, the new ICY BOX IB-262StU2-B, offers an eSATA port additionally to the USB port.

The latest version of the classic ICY BOX IB-351 for 3.5" HDDs has even more to offer. It is connectable via USB, eSATA and Firewire A.

The new ICY BOX IB-2223-StS is a trayless backplane for two 2.5" SATA HDDs. In this case the fast connection is provided by the intern SATA connectors. In the version IB-RD2223StS the backplane includes the capacity to build RAID: RAID 1, RAID 0, JBOD and BIG.



Main Features IB-351StUES2-B

- aluminium case with lateral grid
- for 3.5" SATA I/II HDDs
- USB 2.0, 1394a & eSATA ports
- Chipset: Prolific and Jmicron
- Hot Plug & Play and Hot Swap
- LED for power and HDD
- silent, fanless design
- works vertically and horizontally
- on/off switch at rear side
- power supply USB2.0, 1394a, eSATA cable
- no HDD capacity limit

Main Features IB-262StUS2-B

- Case made of metal and plastic
- Easy Swap® - HDD mount without screws
- works vertically and horizontally
- Hot Plug & Play and Hot Swap
- for 3.5" SATA I/II HDDs
- Silent, fanless design
- transfer rates: USB 2.0 up to 480 Mbit/s, eSATA up to 3 Gbit/s



Main Features IB-2223 series 2 different versions:

- IB-2223StS:
2 SATA HDD 2 SATA Host (one on one)
- IB-RD2223StS:
RAID 0, 1, JBOD und BIG via 1x SATA Host
- 2x 2.5" SATA HDDs (max. 9.5mm height) in 1x 3.5" bay
- Supports all operating systems
- No HDD capacity limit
- LED for power and HDD
- Plug & Play and Hot Swap (only with JBOD and RAID1)
- Easy Swap®

