

# RaidSonic®

...StorageSolutions without limits!



Press release RaidSonic 10.01/2010

## RAIDON

New: RAIDON iH2420

### Best of Both Worlds

In this new Hybrid Runner mobile rack from Raidon one 2.5" SATA HDD and one SSD collaborate in an array. Here both play out their advantages to minimize the disadvantages of each other.



The HDD is good for virtually unlimited accesses, its access speed is not fulfilling. The solid state disk (SSD) is different. Here the access speeds are enormous, but life expectancy isn't. Or you have to pay really much money. Consider a "normal" SSD is already expensive.

#### How the Raidon Hybrid Runner Works

The default setting is a real-time backup from SSD to HDD. The drive you work with is the SSD – because of the speed. All data are copied to the SATA HDD immediately. That takes away the risk of data loss in case of an SSD failure. Should this failure occur you only have to replace the SSD. Hot Swap makes it easy. The automatic recovery will immediately start copying the data from the SATA HDD to the fresh SSD. With a little delay you go on working where you have been stopped.

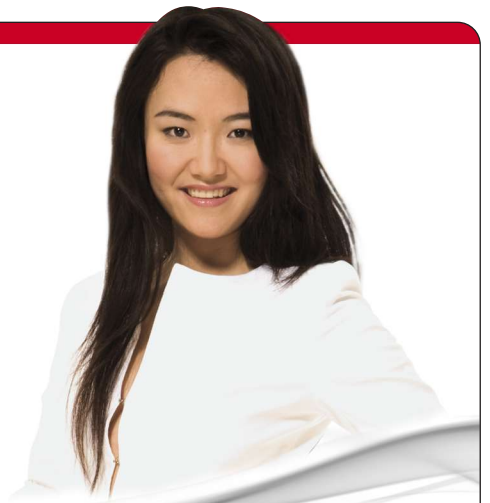
As HDDs usually have more storage capacity than SSDs there remains an area on the HDD which is not used in the backup. This is indicated as a second drive whereas the partitions of both drives used in the backup are indicated as drive one.



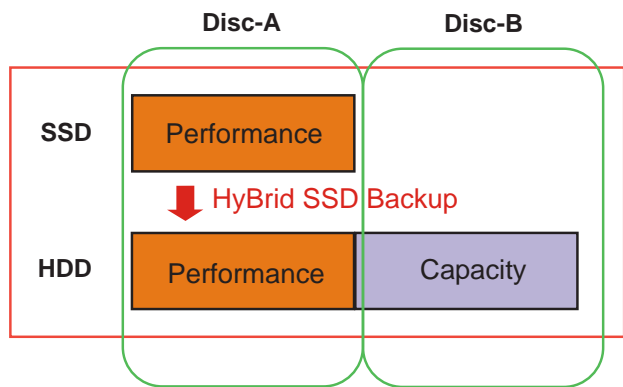
Recommended retail price incl. VAT:  
Euro 79.00

# RaidSonic®

...StorageSolutions without limits!



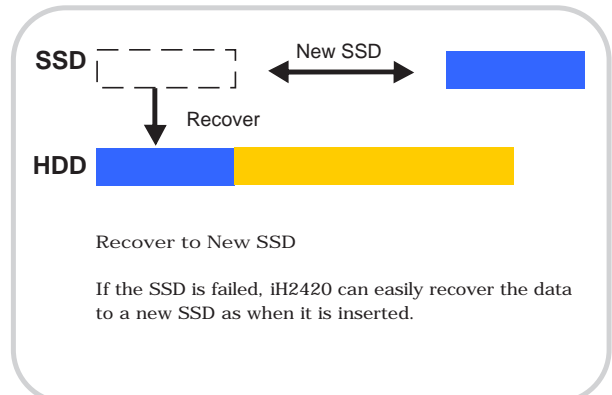
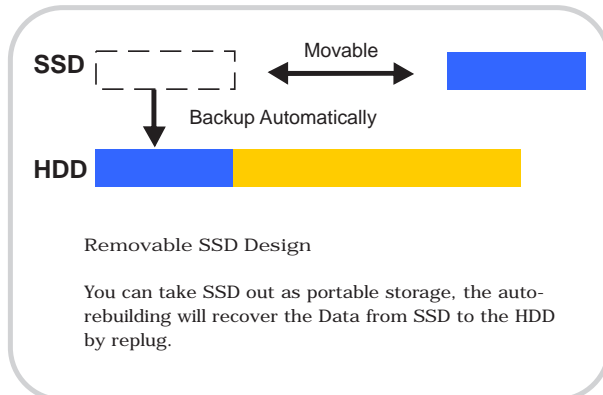
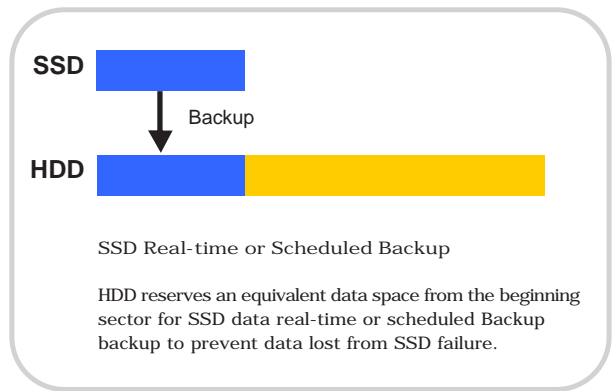
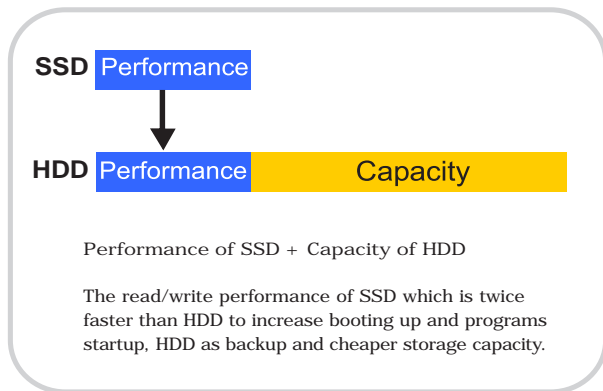
Press release RaidSonic 10.01/2010



Fast + Secure + Big

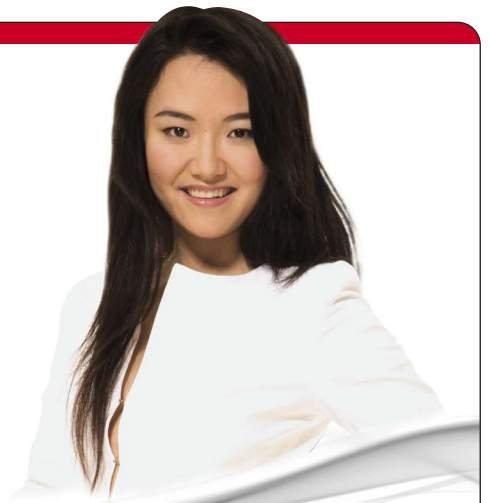
2.5" SSD as System drive for twice faster booting and program startup.

2.5" HDD provides firstly capacity for automatic back-up of the SSD and secondly the remained capacity for low cost storage.



# RaidSonic®

...StorageSolutions without limits!

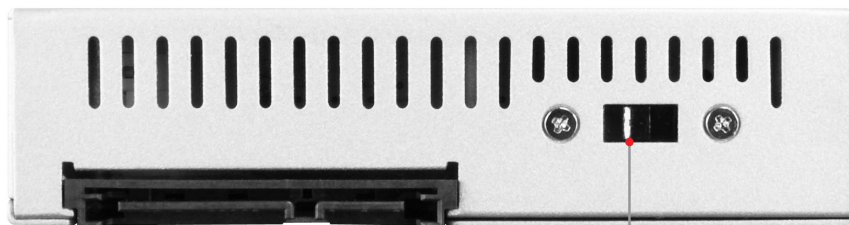


Press release RaidSonic 10.01/2010

## Key features

- Support 1x 2.5" SSD + 1x 2.5" HDD
- HDD capazität up to 2 TB, SSD capacity unlimited (the capacity of HDD have to be bigger than SSD's)
- SSD as boot and system drive for twice faster performance
- Combined with HDD for automatic realtime or scheduled back up and 2. drive with big volume
- 1x SATA host interface (3 Gbit/s)
- Toolless SSD and HDD installation (simply by plug in)
- Aluminium front panel also as SSD/HDD ejection stick

Rear view

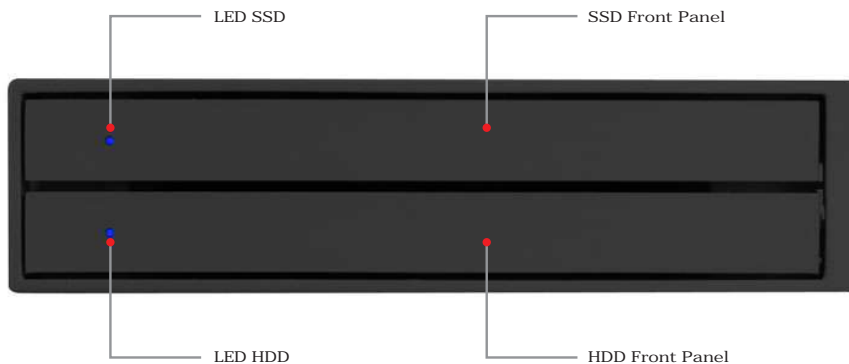


1x SATA Power Connector 15Pin

1x SATA Data Connector 7Pin

Function Setting Switch Hybrid Mode / Clear Mode

Front view



LED SSD

SSD Front Panel

LED HDD

HDD Front Panel