



ICY BOX IB-M2S251

Converter for M.2 SATA SSD to 2.5" SSD



Key features

- Converts a M.2 SATA to a 2.5" SATA HDD
- SATA III Host interface 6 Gbit/s
- For 22 x 42/60/80 mm M.2 SATA
- 7 mm HDD height, capacity not limited
- Windows, Linux, Mac compatible

Packing content

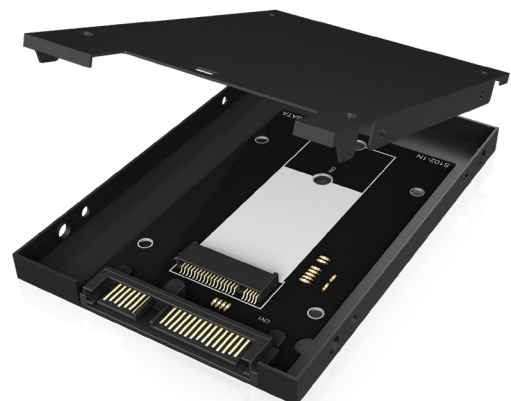
1x IB-M2S251, 1x screw set, 1x manual

Size doesn't matter

IB-M2S251 is a 2.5" SSD enclosure for a M.2 SATA SSD. This allows you to install the little runabout safely in a 2.5" SSD bay. The SATA III host interface provides a transfer speed of up to 6 Gbit/s, so that the SSD is not bored.

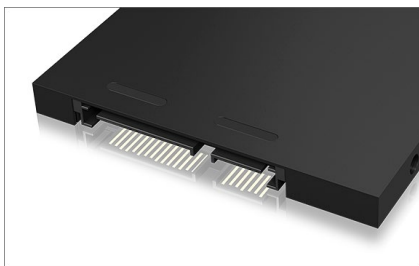
Technical data

Model	IB-M2S251
Article No.	60090
EAN code	4250078164319
Brand	ICY BOX
Article text	Converter for M.2 SATA SSD
Colour	Black
Material	Aluminium
HDD interface	M.2 SATA with „B“-Key & „B+M“-Key
M.2 card size	22 x 42/60/80 mm
HDD height	7 mm
HDD capacity	No limit
External data interface	1 x 2.5" SATA I/II/III 6 Gbit/s
Operating system	Windows, Linux, Mac compatible
Transfer rate	SATA III up to 6 Gbit/s
UASP	No
Chip set	No
Power connector	SATA powered





ICY BOX **IB-M2S251** Converter for M.2 SATA SSD to 2.5" SSD



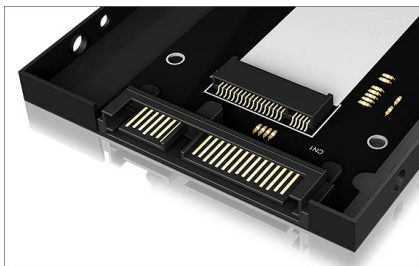
Common ground

Designed to connect the new types of SSDs with the leading existing formats. It converts your mSATA SSD to a reliable 2.5" SATA SSD.



Safety

The IB-MSS251 offers a safe protected place for your HDD in order for it to have a long life span.



Quality

The high-quality aluminum housing not only offers advantages in heat dissipation, but also additional protection against external influences.

Logistical data

Packing unit: 40 pcs./carton
Total weight: 5,8 kg/carton
Gross weight: (with packing): 0.134 kg
Net weight: 0.046 kg

Dimension/Carton: 500x220x300 mm
Dimension (with packing): 200x100x25 mm
Dimension of article: 99x69x7 mm
Country of Origin: China

